



Workshop on the Danube Region Geothermal Concept (DanReGeotherm)

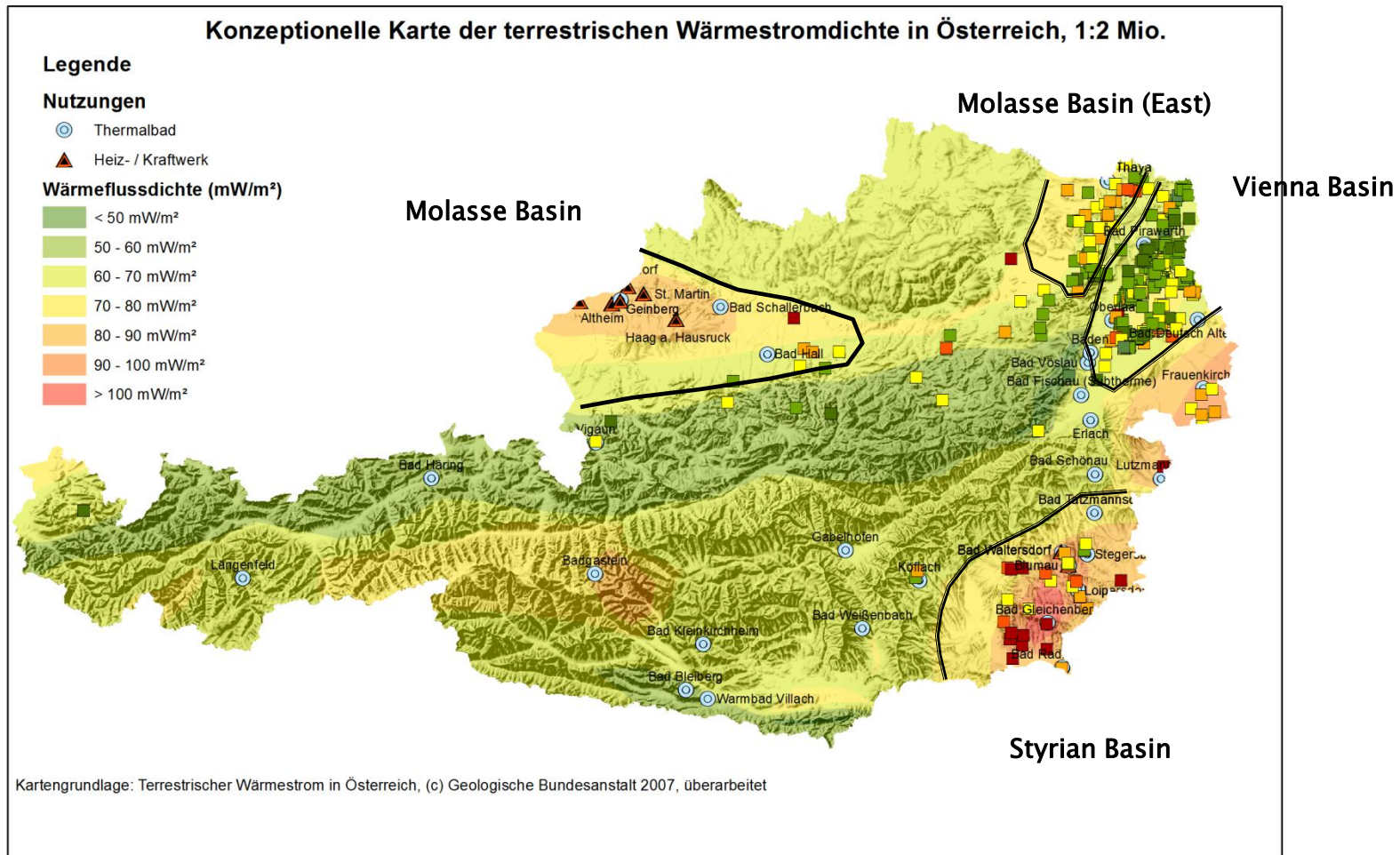
*Budapest, 28 November 2013
Geological and Geophysical Institute of Hungary*

Country update: Austria

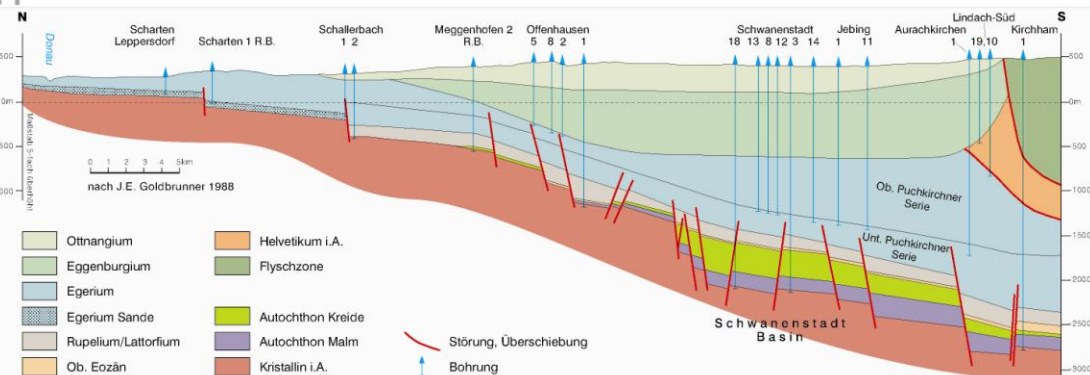
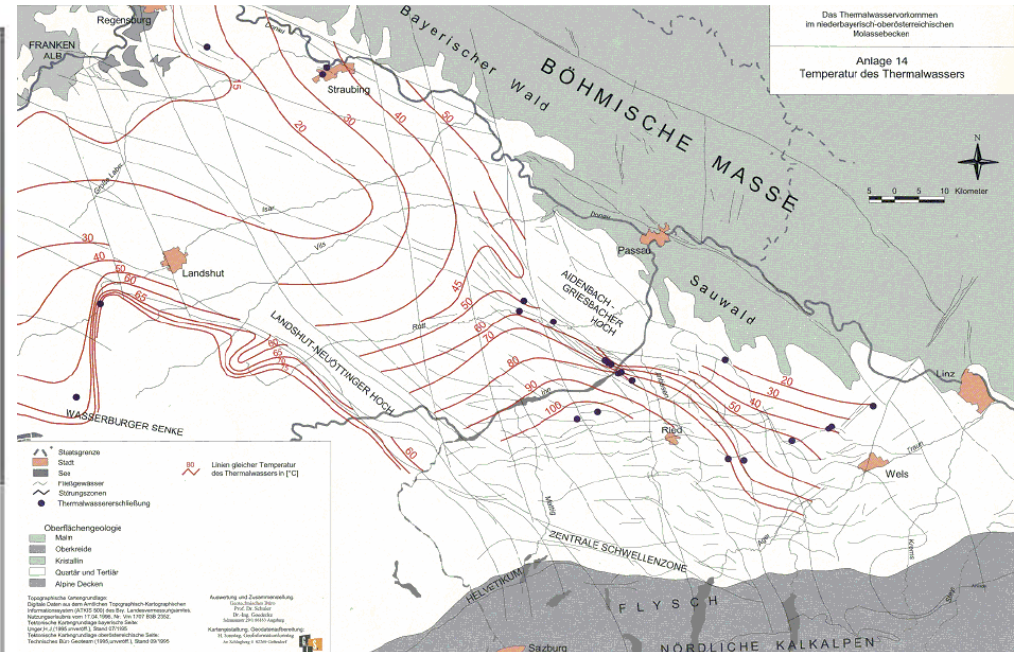
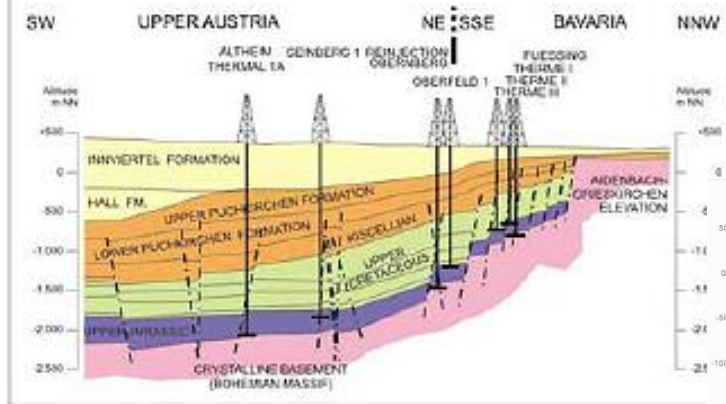
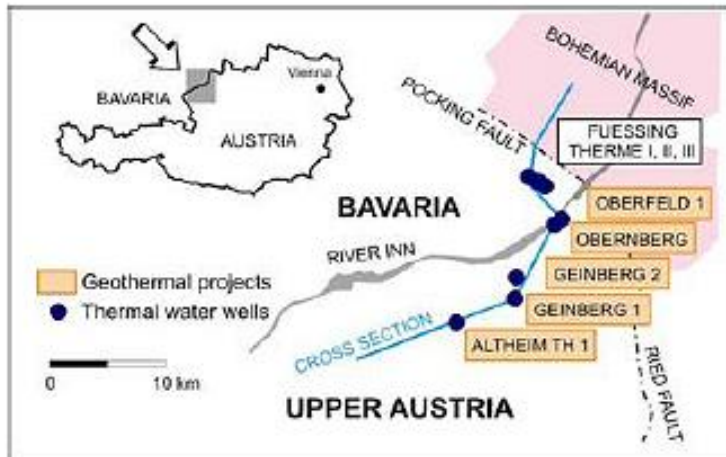
GOETZL Gregor
Senior Researcher
Geological Survey of Austria

**Multiple any of the slides if necessary
Keep in mind that each country has strictly 10 mins for presentation!**

Main deep geothermal reservoirs

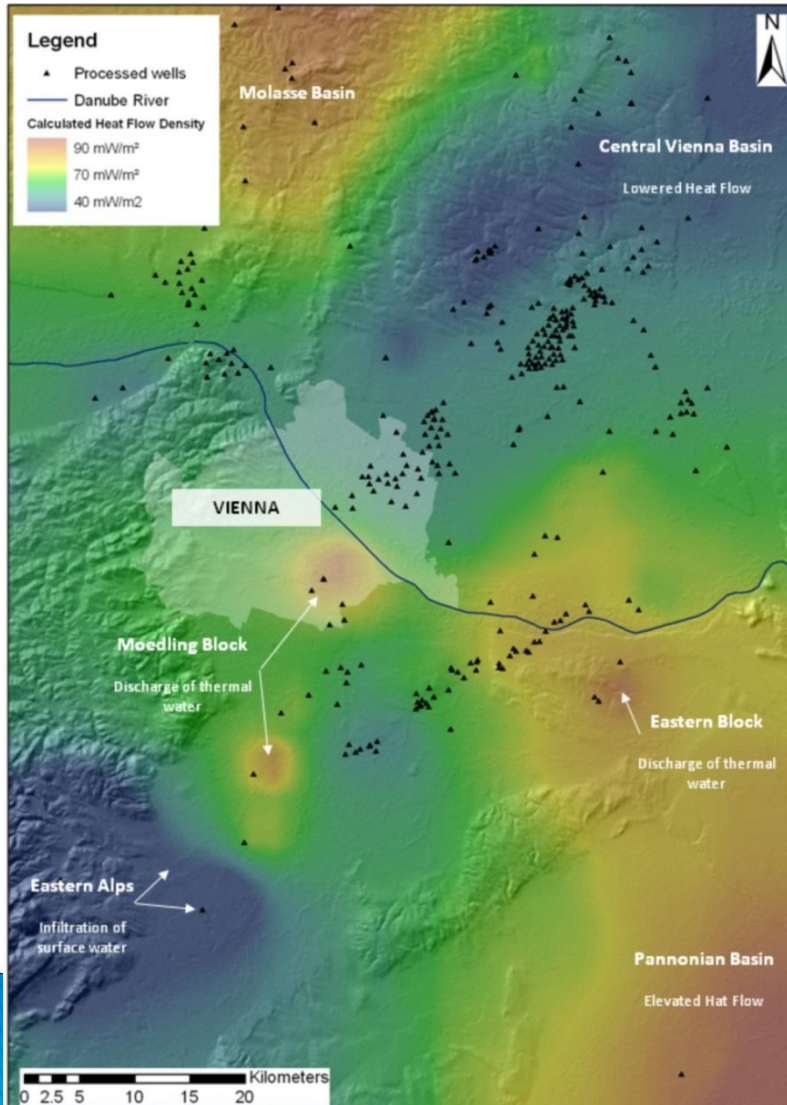


Molasse Basin (Upper Austria, Salzburg)



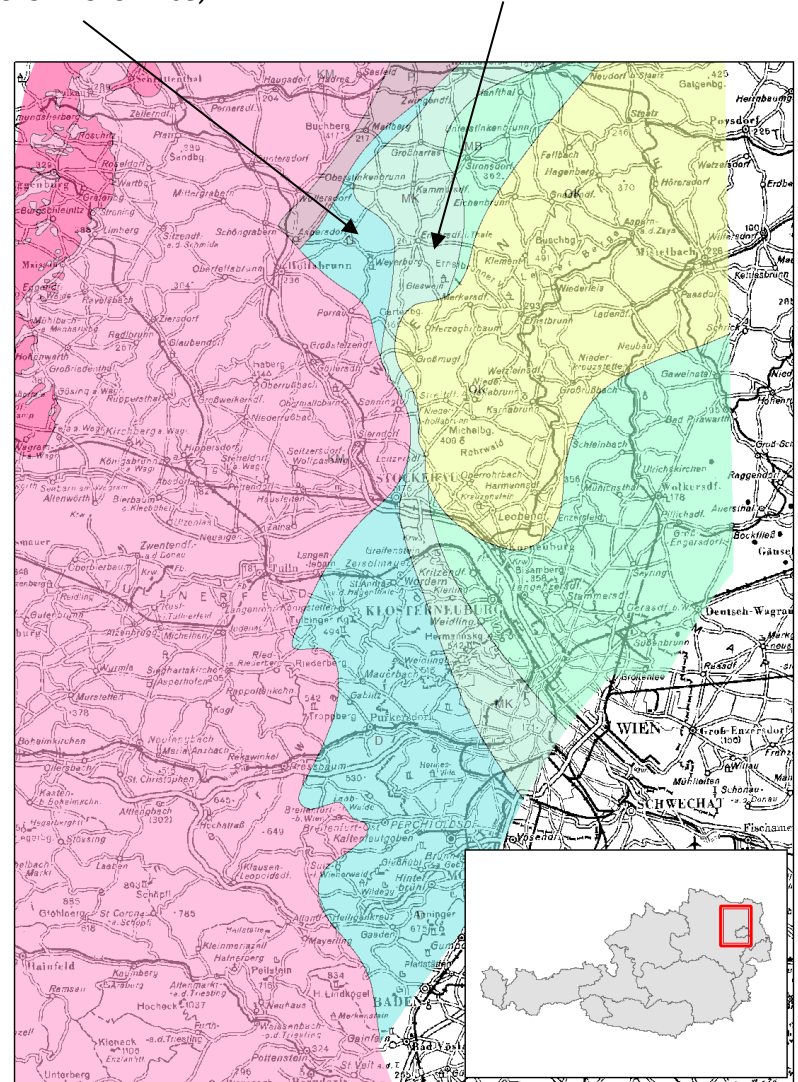
Main deep geothermal reservoirs

Molasse Basin (Lower Austria)



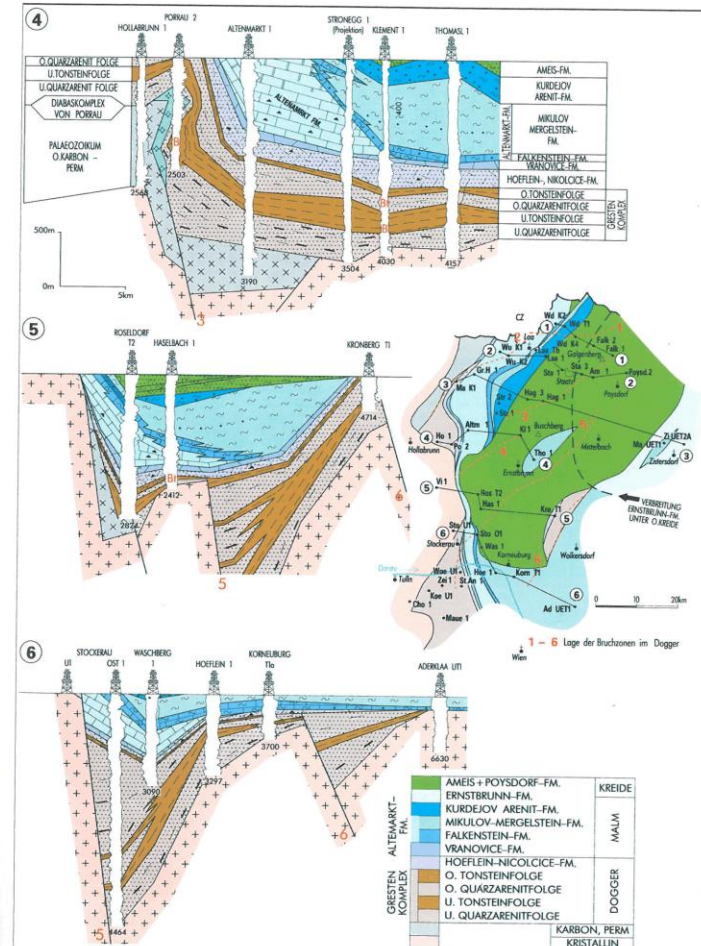
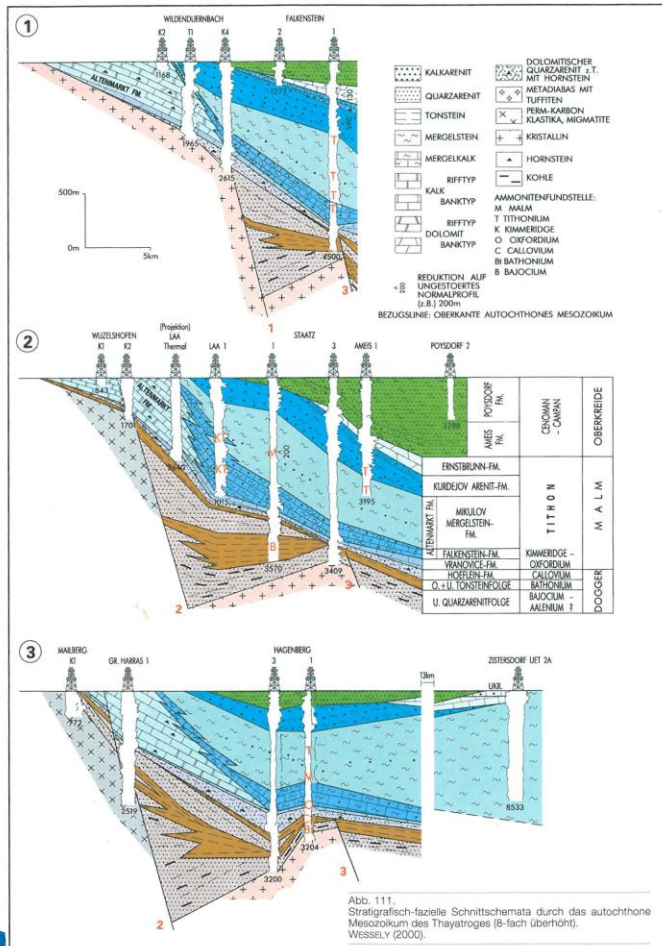
Dogger sediments
(Arenits & Dolomite)

Malm sediments (Limestone)



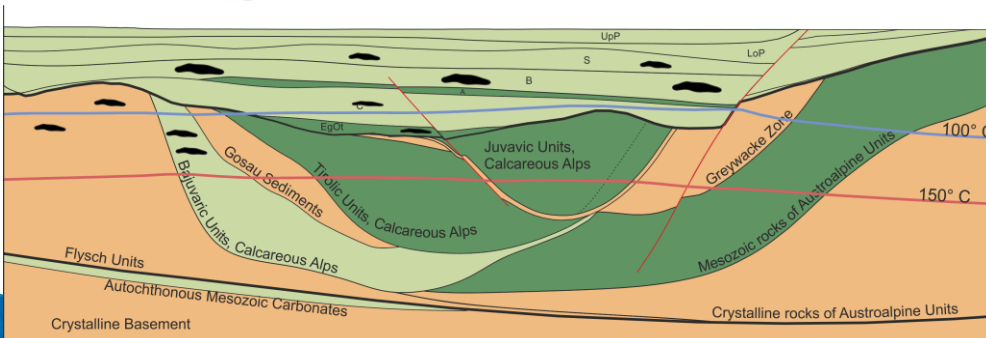
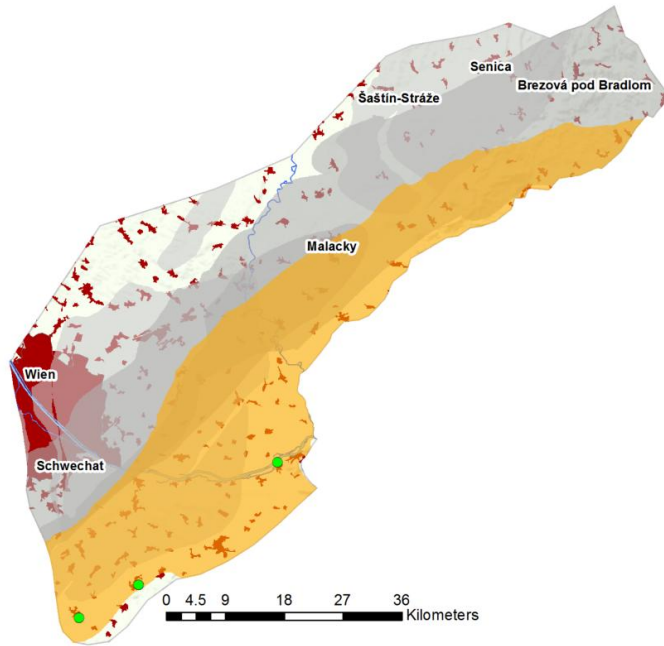
Main deep geothermal reservoirs

Molasse Basin (Lower Austria)

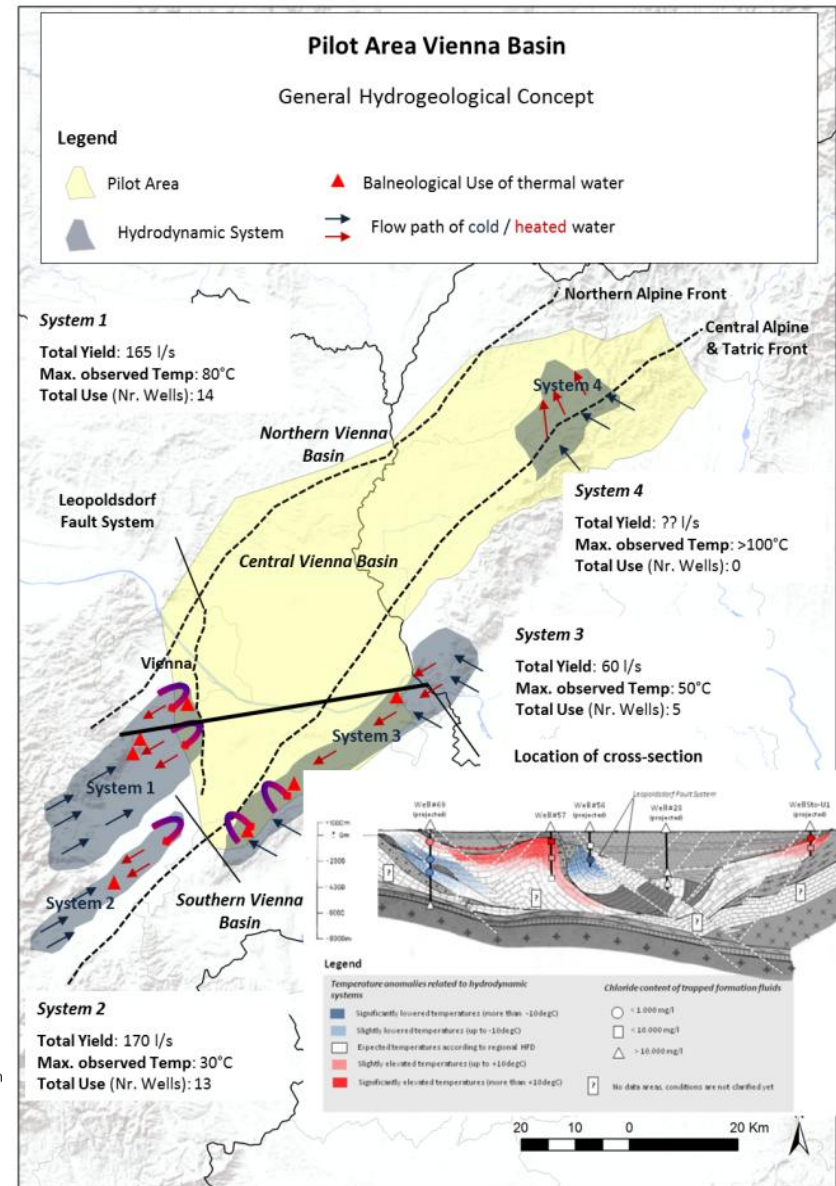


Main deep geothermal reservoirs

Vienna Basin



UpP - Upper Pannonian, LoP - Lower Pannonian, S - Sarmatian, B - Badenian, A - Aderklaa Conglomerate C - Carpathian, EgOt - Eggenburgian, Ottangian



Main deep geothermal reservoirs

Vienna Basin

Probable Reserves

Hydrogeothermal Play

1a – Tirolic Nappes

1b – Juvavic Nappes

2 Deltafront Sediments

3 – Aderklaa Conglomerate

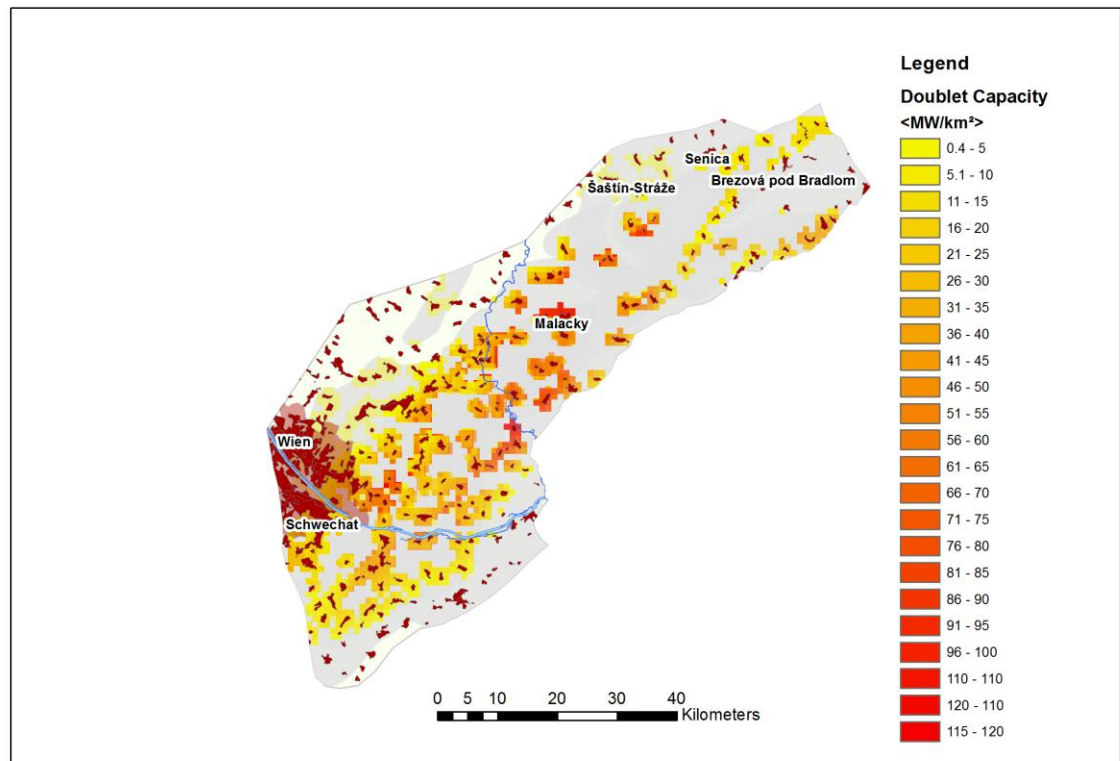
4 – Central Alpine & Tatric Units

$$\Sigma = 49.273 \text{ GW}_{\text{TH}}$$

¹Referring to a maximum distance to settlement area of 1000 meters

All Hydrogeothermal plays

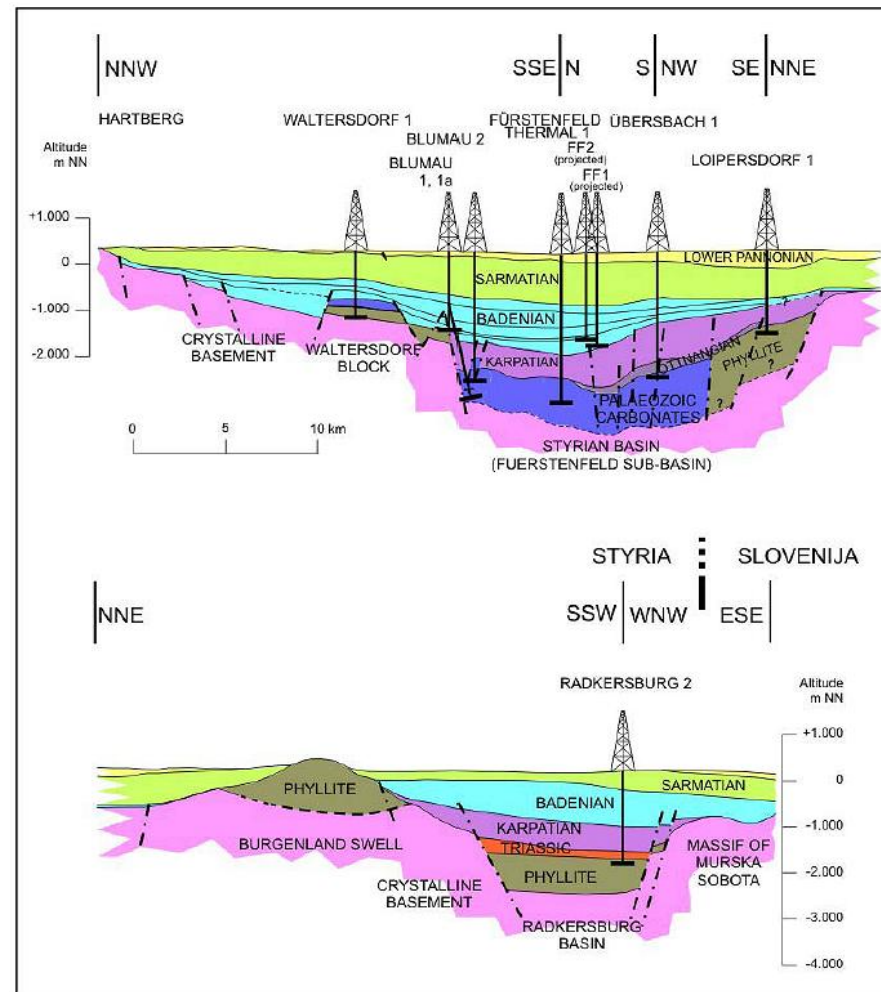
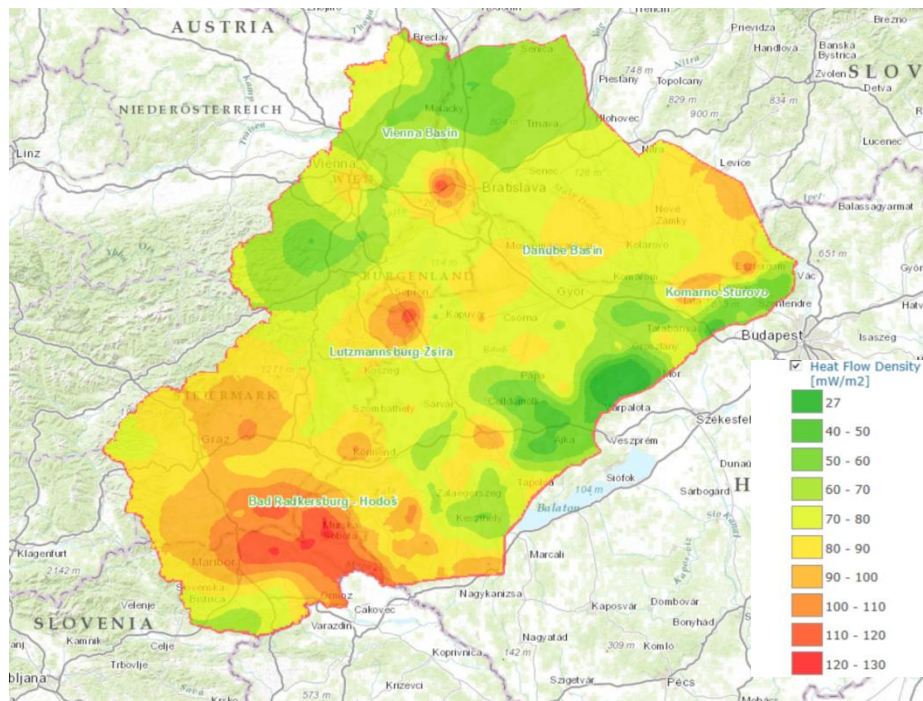
Area of utilization 1000 meters around settlement



Main deep geothermal reservoirs

Styrian Basin

Heatflow density – Transenergy region



Main types of current utilization of geothermal energy

Total Capacity
GDH 51.5 MW

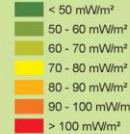
Total Capacity
Electric power 2 MW

Number of GDH
plants 8

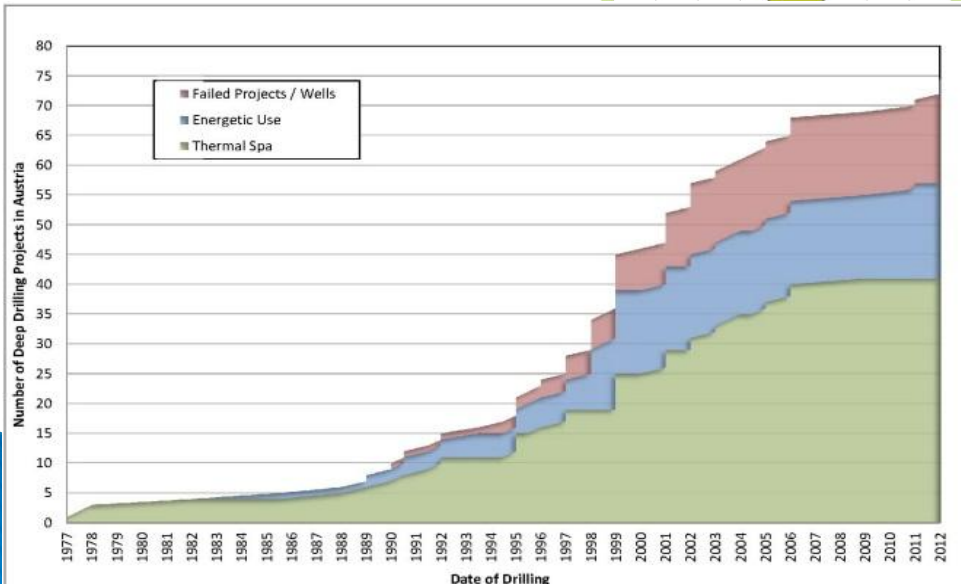
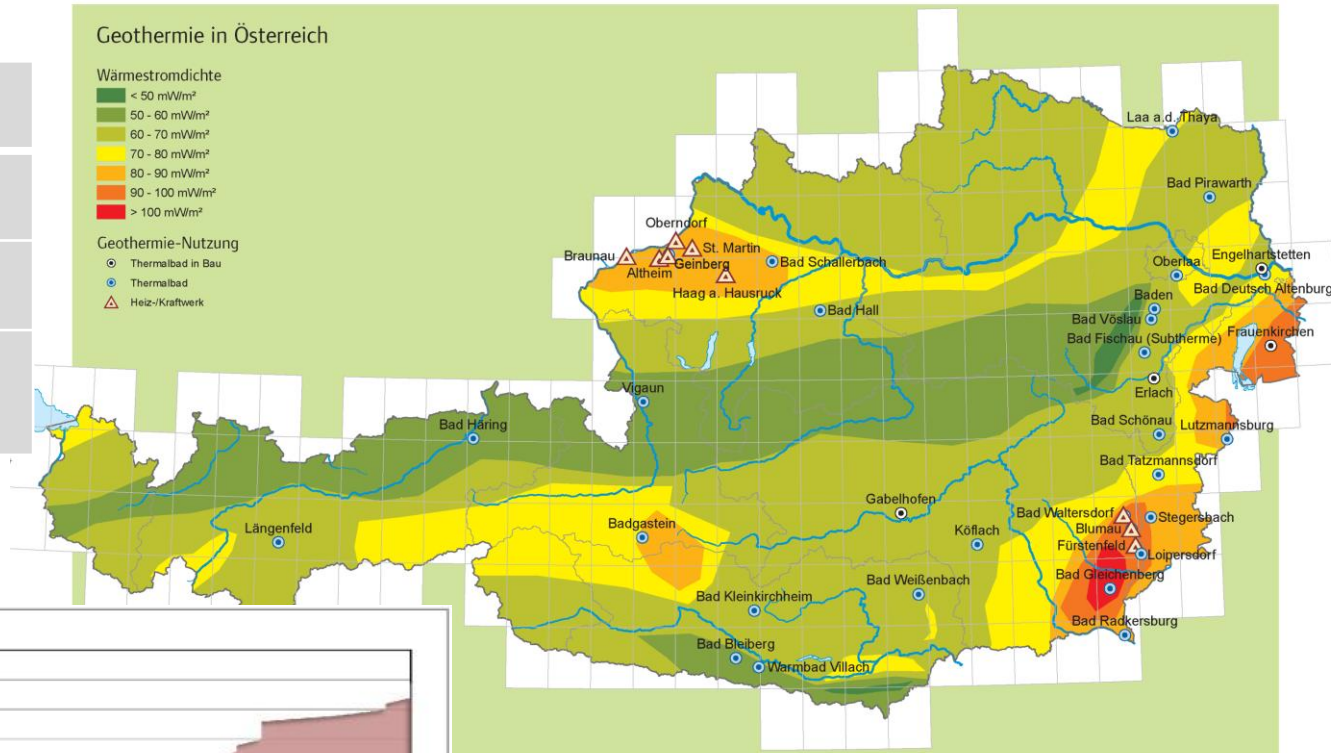
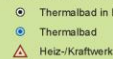
Number of
electric power
plants 2

Geothermie in Österreich

Wärmestromdichte

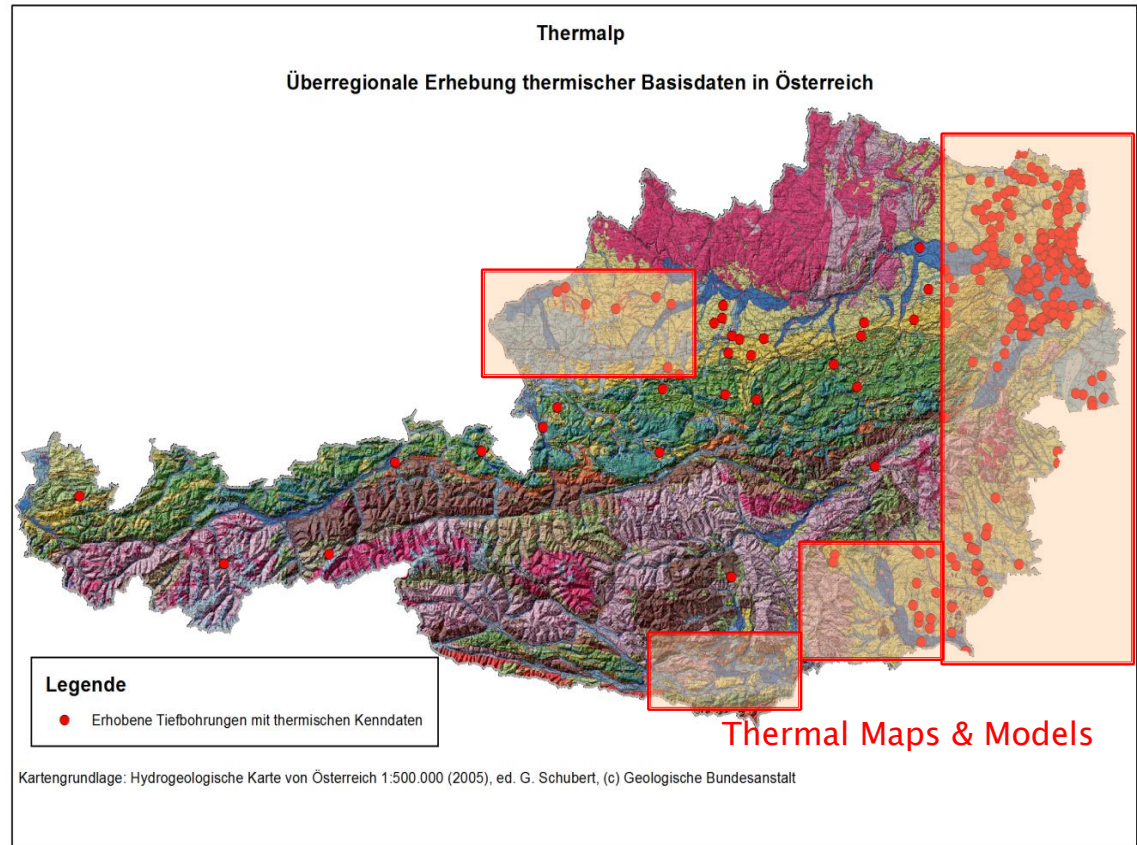


Geothermie-Nutzung



Data policy

- GBA obtains the largest collections of thermal data in Austria
- In total ~1000 temperature measurements available in Austria
- ~50% of vailable data published
- Thermal surveys by GBA in Alpine Regions



Main stakeholders of geothermal projects

➤ Authorities:



➤ Energy supplier:



➤ Communities:

➤ Wellness & tourism:



- No expert association for geothermal energy established yet in Austria